



**HARLEQUIN**  
The world dances on Harlequin floors®

Uniclass L84621:L5364	EPIC E434:E422
CI/SfB 52 (43) Tn6	

## Portable & Permanent Vinyl Floors

# HARLEQUIN REVERSIBLE

HARLEQUIN REVERSIBLE is the classic double-sided stage and performance floor.

HARLEQUIN REVERSIBLE securely established itself years back as the classic double-sided stage floor. It is a calendared vinyl consisting of a complex "sandwich", providing a slip resistant surface on both sides. These special wear-coats are easy to maintain and they are approved by dancers as a loose-lay floor on stage and in the studio.

HARLEQUIN REVERSIBLE is simple to unroll across your stage or dance studio. You just tape the seams and edges - and your floor's ready! When the show's over, quickly roll up your Harlequin and store it or move it to another venue.

HARLEQUIN REVERSIBLE is a different colour on each side, so you can use it either side up. Two floors in one! And because Harlequin Reversible is a full two metres wide, you have fewer joints.

### British Harlequin plc

Festival House, Chapman Way  
Tunbridge Wells, Kent TN2 3EF  
Tel. 01892 514 888  
Fax 01892 514 222  
Freephone 0800 28 99 32  
www.harlequinfloors.com  
enquiries@harlequinfloors.com

### Harlequin Europe SA

29, rue Notre-Dame  
L-2240 Luxembourg  
Tel. +352 46 44 22  
Tel. FR +352 46 44 99  
Tel. DE +352 46 39 39  
Free phone 008 009 069 1000  
Fax +352 46 44 40  
www.harlequinfloors.com  
info@harlequinfloors.com

### American Harlequin Corporation

1531 Glen Avenue, Moorestown  
NJ 08057, USA  
Tel. +1 (1) 856 234 5505  
Toll Free in USA 800 642 6440  
Fax +1 (1) 856 231 4403  
www.harlequinfloors.com  
dance@harlequinfloors.com

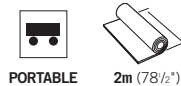
### Harlequin Australasia Pty Ltd.

PO Box 1028, 36A Langston Place  
Epping, NSW 1710, Australia  
Tel. +61 (2) 9869 4566  
AUS Freecall 1300 666 900  
Fax +61 (2) 9869 4547  
www.harlequinfloors.com  
auscontact@harlequinfloors.com

### Harlequin Asia Limited

1801 The Strand  
49 Bonham Strand, Sheung Wan  
Hong Kong  
Tel: +852 254 11 666  
Fax: +852 254 11 999  
www.harlequinfloors.com  
hksales@harlequinfloors.com

LONDON  
LUXEMBOURG  
LOS ANGELES  
PHILADELPHIA  
FORT WORTH  
SYDNEY  
HONG KONG

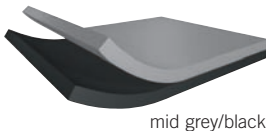


PORTABLE

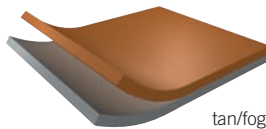
2m (78 1/2")



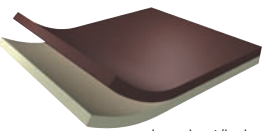
black/white



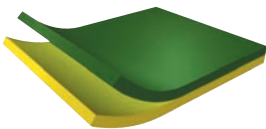
mid grey/black



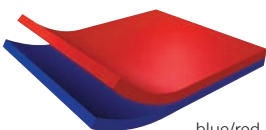
tan/fog



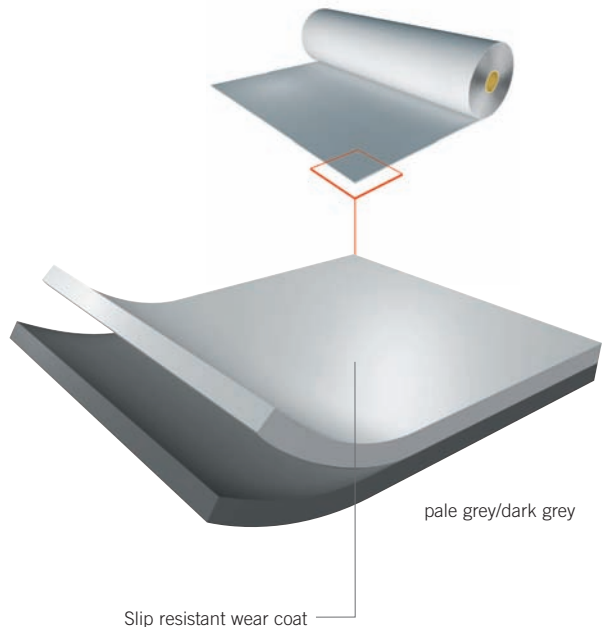
hazelnut/beige



chromakey green/  
chromakey yellow



blue/red



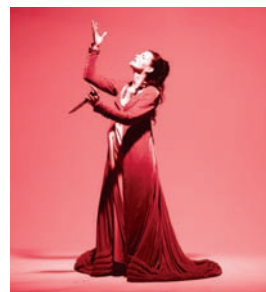
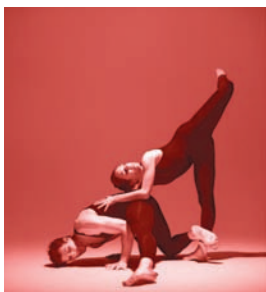
pale grey/dark grey

Slip resistant wear coat

## Application Guide - Harlequin's Portable & Permanent Vinyl Floors

- The more dots, the more suitable the floor for the particular type of dance.

	BALLET	CONTEMPORARY	JAZZ/THEATRE	TAP/ PERCUSSIVE	AEROBICS	MULTI-PURPOSE	STAGE/OPERA	ROCK	TV	DISPLAY	PERMANENT	TEMPORARY
<b>Reversible</b>	•••	•••	•••	••			•	••	•	•	✘	✓
<b>Studio</b>	•••	•••	••		••	••	•••	•••			✓	✓
<b>Cascade</b>	•••	•••	•••	••		••	•••	•••			✓	✓
<b>Allegro</b>	••	•••	••		•••						✓	✓
<b>Tempo</b>	••	•••	••		••	••		•••			✓	✓
<b>Fiesta</b>	••	••	•••	••		•••					✓	✘
<b>Standfast</b>	••	••	•••	•••		••	•••	•••			✓	✘
<b>Hi-Shine</b>							••	••	•••	•••	✘	✓
<b>Showfloor</b>								•	••	•••	✘	✓
<b>Marine</b>	••	••	•••	•••		••	•••	•••			✓	✘



### Specification

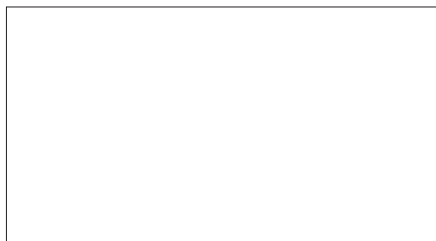
Roll Width	2m (78½")
Roll Length	10m, 15m, 18m, 20m, 25m (32'7", 49'3", 59', 65'7", 82')
Thickness	1.3mm (0.05")
Weight	1.6 kg/m <sup>2</sup> (2.9 lbs/yd <sup>2</sup> )
Colours	Pale grey/dark grey, black/white, grey/black, tan/fog, hazelnut / beige, green/yellow, red/blue
Permanent/ Portable	Portable
Fire Rating	NF P 92-507 class M3 EN 1305-1 class BFL-s1

### Reversible - Vinyl Floor

HARLEQUIN REVERSIBLE is ideally laid on any hard smooth surface, such as a wooden stage, and is intended to be loose-laid.

HARLEQUIN REVERSIBLE is just one of a unique range of flooring we produce. Be sure to ask about the full range of Harlequin floors for Dance, Performing Arts, Theatre, Opera, Shows and Concerts, TV/Film Studios, Exhibitions and Displays.

### DISTRIBUTOR



08/09/BH001

**HARLEQUIN**  
The world dances on Harlequin floors®



CONTACT US FOR SAMPLES ON **FREEPHONE: 0800 28 99 32**

The Company reserves the right to make any variation in design or construction of the material described.  
Country of origin: Made in the EU © British Harlequin plc, American Harlequin Corporation and Harlequin Europe SA. 2009

Photography: Richard Dunkley

Dancers left to right: Paulin Huguet & Roland Cox, Paulin Huguet & Roland Cox, Ana Lucia Alves, Ana Lucia Alves