



**HARLEQUIN**  
The world dances on Harlequin floors®

## Accessories

# HARLEQUIN ROLL CARTS

Roll carts allow for safe storage and easy handling of rolls of Harlequin vinyl floors

The heavy gauge poles which support the rolls of flooring have special end fittings to locate them securely on the cart and a centre support to prevent bowing of the rolls. Two handles are supplied with each cart to assist with loading and unloading and, when not in use, these locate on the end panel to help manoeuvre the cart itself.

All carts are fitted with four heavy-duty swivel castors with brakes and non-marking polyamide wheels.

CUSTOM DESIGNS ARE AVAILABLE. CONTACT US FOR FULL DETAILS.

**British Harlequin plc**  
Festival House, Chapman Way  
Tunbridge Wells, Kent TN2 3EF  
Tel. 01892 514 888  
Fax 01892 514 222  
Freephone 0800 28 99 32  
www.harlequinfloors.com  
enquiries@harlequinfloors.com

**Harlequin Europe SA**  
29, rue Notre-Dame  
L-2240 Luxembourg  
Tel. +352 46 44 22  
Tel. FR +352 46 44 99  
Tel. DE +352 46 39 39  
Free phone 008 009 069 1000  
Fax +352 46 44 40  
www.harlequinfloors.com  
info@harlequinfloors.com

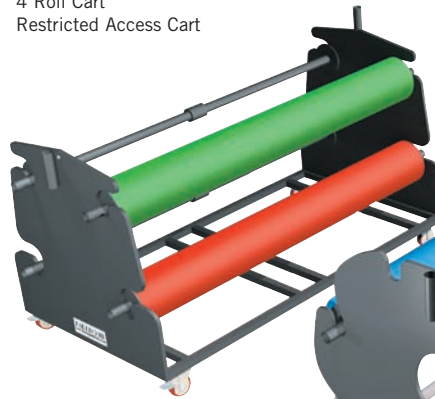
**American Harlequin Corporation**  
1531 Glen Avenue, Moorestown  
NJ 08057, USA  
Tel. +1 (1) 856 234 5505  
Toll Free in USA 800 642 6440  
Fax +1 (1) 856 231 4403  
www.harlequinfloors.com  
dance@harlequinfloors.com

**Harlequin Australasia Pty Ltd.**  
PO Box 1028, 36A Langston Place  
Epping, NSW 1710, Australia  
Tel. +61 (2) 9869 4566  
AUS Freecall 1300 666 900  
Fax +61 (2) 9869 4547  
www.harlequinfloors.com  
auscontact@harlequinfloors.com

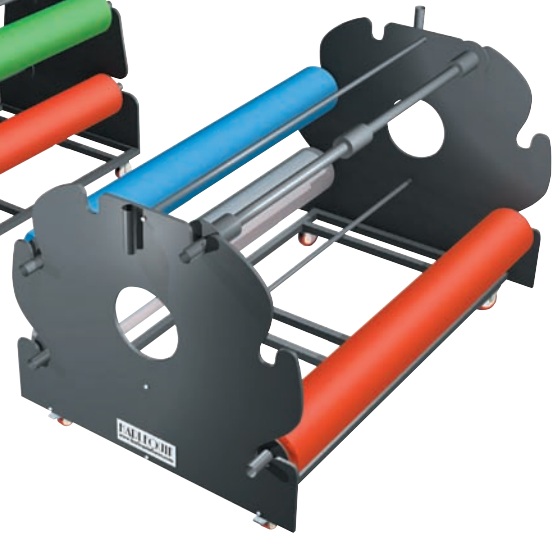
**Harlequin Asia Limited**  
1801 The Strand  
49 Bonham Strand, Sheung Wan  
Hong Kong  
Tel: +852 254 11 666  
Fax: +852 254 11 999  
www.harlequinfloors.com  
hksales@harlequinfloors.com

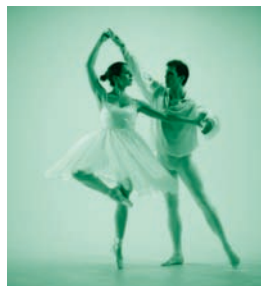
LONDON  
LUXEMBOURG  
LOS ANGELES  
PHILADELPHIA  
FORT WORTH  
SYDNEY  
HONG KONG

4 Roll Cart  
Restricted Access Cart



6 Roll Cart





## Specification

### 6 Roll Standard Cart

Overall width	1.1m (43 <sup>1</sup> / <sub>4</sub> "	
Overall height	1.14m (44 <sup>3</sup> / <sub>4</sub> "	
Max. roll diam.	0.37m (14 <sup>1</sup> / <sub>2</sub> "	
	2m length	1.5m length
Overall length	2.23m (87 <sup>3</sup> / <sub>4</sub> "	1.73m (68"
Unladen weight	182kg (400lbs)	159kg (350lbs)

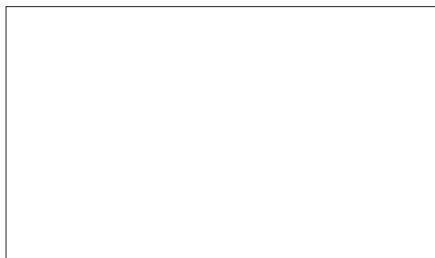
### 4 Roll Restricted Access Cart

Overall width	0.86m (34"	
Overall height	1.02m (40"	
Max. roll diam.	0.40m (15 <sup>3</sup> / <sub>4</sub> "	
	2m length	1.5m length
Overall length	2.23m (87 <sup>3</sup> / <sub>4</sub> "	1.73m (68"
Unladen weight	155kg (340lbs)	132kg (290lbs)

## Roll Storage Cart - Accessories

Constructed from black scratch-resistant powder-coated steel, Harlequin Roll Storage Carts are available in two models: a 6 roll standard cart and a 4 roll restricted access cart. Each model is available in 2 metre or 1.5m length to accommodate any of our Harlequin rolls.

DISTRIBUTOR



08/09/BH001

**HARLEQUIN**  
The world dances on Harlequin floors®



CONTACT US FOR SAMPLES ON **FREEPHONE: 0800 28 99 32**

The Company reserves the right to make any variation in design or construction of the material described.  
Country of origin: Made in the EU © British Harlequin plc, American Harlequin Corporation and Harlequin Europe SA. 2009

Dancers left to right: Paulin Huguet & Roland Cox, Femi Oyewole, Ana Lucia Alves, Femi Oyewole