



Harlequin CASCADE™ Classical style.

With a soft feel, yet hard-wearing, stable yet pliable, **Harlequin CASCADE™** has a slightly embossed, non-slip surface that provides extra grip and reassurance for dancers of classical ballet.

Harlequin CASCADE™ is renowned for being the most supple, stable dance floor on the market. A whole generation of directors and professional dancers have been won over by its durability. The lightly embossed surface has an excellent grip that gives dancers complete confidence, while the matt finish makes it extremely popular with lighting designers.

Harlequin CASCADE™ can withstand heavy stage props, scenery and lighting towers. Suitable for use as an indoor or outdoor stage floor or in the practice studio, **Harlequin CASCADE™** gives performers added protection either as a loose lay or permanent installation, particularly on top of one of our sprung floors.

Orders of 500m² or more can be produced in a colour of your choice

SPECIFICATION

Roll length

10m, 15m, 20m, 25m

Roll width

2m

Thickness

2mm

Weight

2.6kg/m²

Sound insulation rating

3dB

(European standard EN ISO 717-2)

Fire rating

Bfl S1

(European standard EN 13501-1)

Colours

black

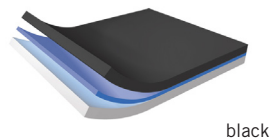
grey

dark grey

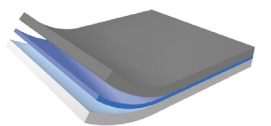
white

dark brown

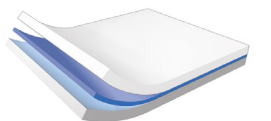
Custom colours available for orders over 500m²



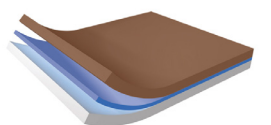
black



dark grey



white



dark brown

