



Harlequin LIBERTY™

Portable block-mounted sprung floor system for loose lay or permanent installation

Harlequin LIBERTY™ sprung floors are available in two versions: permanent and portable.

They help to prevent injuries and offer dancers a safe and secure surface on which to work.

Harlequin LIBERTY™ permanent panels offer a unique advantage: they are quick and easy to dismantle and re-install in a different venue or a different configuration.

Harlequin LIBERTY™ portable panels are intended for both touring dance companies and entertainment venues where the existing stage floors are too hard for dancing and need to be covered with a sprung floor temporarily.

Load-bearing capacity

Maximum static load: 454 kg/m² (portable panels)

Timber blocks can be fitted underneath the panels to raise the load-bearing capacity to 1,500 kg/m² when used with tiered seating.

Maximum dynamic load: 227 kg/m² (permanent panels)

When rolling heavy loads 10 mm plywood panels should be used on the Liberty floor to spread the load.



Fit your Harlequin LIBERTY™ panels with just one key turn!

- ① The tongue-and-groove panels fit together easily.
- ② The latch system securing the panels ensures top results.
- ③ The latch engages with the receiver by turning the locking key.
- ④ One turn of the locking key is all it takes.

Special features of Harlequin LIBERTY™

- The pivot joints and elastomer blocks ensure uniform performance across the entire floor surface, giving dancers the same 'feel' and energy return anywhere on the floor.
- Available in two versions, as portable or permanent panels, **Harlequin LIBERTY™** offers dancers the same level of comfort both in the practice studio and on stage.
- In September 2001, five different sprung floor systems were tested according to DIN standard 18032, part II, specially adapted to the requirements of dancers. **Harlequin LIBERTY™** scored highest with a maximum shock absorption of 67% and an energy return of 20.7% on average.

DIN standard 18032-2 test results for Harlequin LIBERTY™

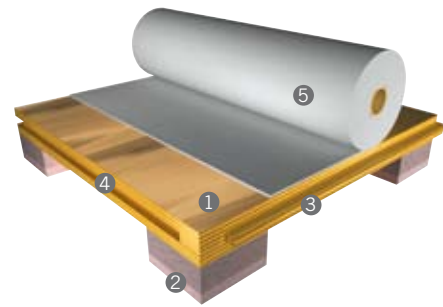
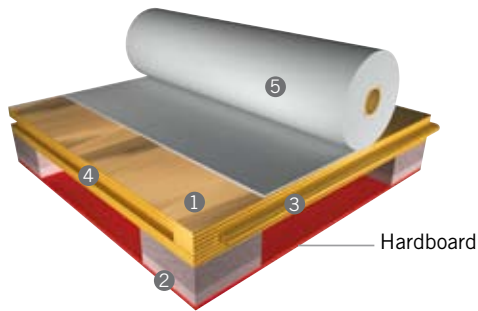
	Shock absorption	Vertical deformation	Surface deformation	Resistance to rolling loads
Requirements under the standard	Min. 53%	Min. 2,3 mm	Max. 15%	Min. 1500 N
Harlequin LIBERTY™	67%	4,1 mm	12,8%	> 1500 N

Harlequin Europe SA
29, rue Notre-Dame
L-2240 Luxembourg
Tel. +352 46 44 22
Fax +352 46 44 40
Freephone 00 800 90 69 1000
www.harlequinfloors.com
info@harlequinfloors.com

LUXEMBOURG
LONDON
LOS ANGELES
PHILADELPHIA
FORT WORTH
SYDNEY
PARIS
HONG KONG
MADRID

Harlequin LIBERTY™ portable panels

Harlequin LIBERTY™ permanent panels



Specifications (both versions)

- ① 18 mm birch multi-ply
(13 layers bonded together with high-quality resin)
- ② Elastomer blocks
- ③ Integral tongue
- ④ Integral groove
- ⑤ Harlequin vinyl dance floor

Panel dimensions:

2 m x 1 m /full size panel
1 m x 1 m /half size panel

Weight: 36 kg/full size panel

Installed thickness not including dance surface: 42 mm

Laying time: 120 m² per hour with two people

Panel dimensions:

2 m x 1 m /full size panel
1 m x 1 m /half size panel

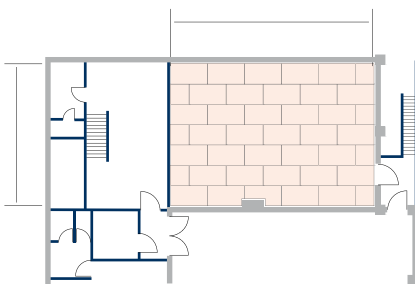
Weight: 25 kg/full size panel

Installed thickness not including dance surface: 37 mm

Laying time: 100 m² per day with two people

- The only technical difference between the permanent and portable versions is the hardboard backing fixed to the underside of the panels to:
 - ease sliding the panels into position
 - protect the elastomer blocks
 - facilitate stacking the panels
- For safety and aesthetic reasons, we recommend fitting ramps or edge trims, specially tailored to the panels, to cover exposed edges (portable panels only).

Configuration of the panels in staggered rows



Example of Harlequin LIBERTY™ configuration (can be adapted to suit requirements).

Design and construction

- Panels are made out of birch multi-ply.
- Each panel is fitted with dual density shock-damping elastomer blocks to ensure uniform, consistent shock absorption. Tested using the Shore Durometer Test, the dual density enables the blocks to compress gradually, providing exactly the same degree of shock absorption and energy return to one or more dancers on the same panel.
- The panels are laid in brickwork fashion (i.e. staggered rows) so that the joints don't coincide, and are linked to each other by tongue-and-groove joints.
- The tongues stop 20 mm from the corners, making the floor more resistant to heavy loads.
- The edges of the panels are supported by elastomer blocks.

Harlequin Europe SA
29, rue Notre-Dame
L-2240 Luxembourg
Tel. +352 46 44 22
Fax +352 46 44 40
Freephone 00 800 90 69 1000
www.harlequinfloors.com
info@harlequinfloors.com

LUXEMBOURG
LONDON
LOS ANGELES
PHILADELPHIA
FORT WORTH
SYDNEY
PARIS
HONG KONG
MADRID