



**HARLEQUIN**  
The world dances on Harlequin floors®

Uniclass L84621	EPIC E434
CI/SfB 52 (43) X	

## Portable & Permanent Vinyl Floors

# HARLEQUIN HI-SHINE

HARLEQUIN HI-SHINE rolls out instantly to a breathtaking wet-look finish - a perfect display floor for the entertainment industry.

HARLEQUIN HI-SHINE has a special laminated hard polymer ultra-gloss surface, which is superior to urethane for scratch-resistance.

HARLEQUIN HI-SHINE is a roll-out floor for television, commercials, movie sets, operas, product launches and fashion runways to name just a few. Hi-Shine is also requested for award dinners and celebrity performances which require a quick load-in and breakdown. It is a quick simple (and very economical) answer for photo shoots where you need a smooth, shiny floor which requires speed of installation. Designers ask for Hi-Shine consistently to produce effects like water, fire, pavement etc.

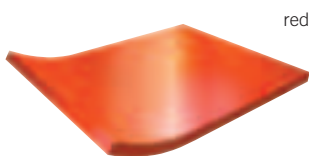


PORTABLE

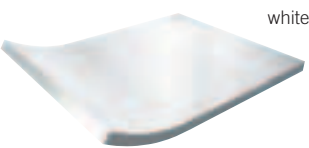


1.5m (59")

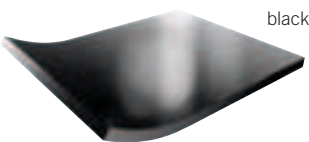
Alternative colour options



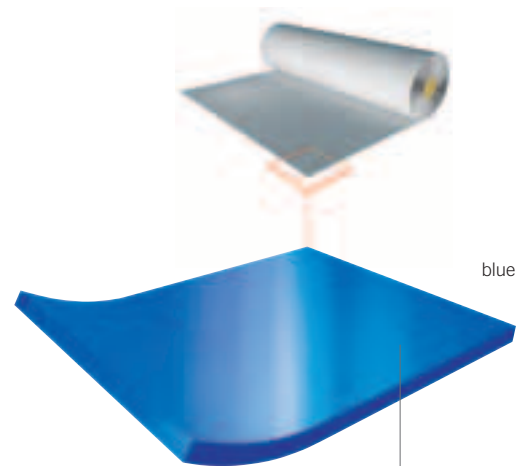
red



white



black



Calendered laminated PVC  
with special high-gloss PET  
surface

**British Harlequin plc**  
Festival House, Chapman Way  
Tunbridge Wells, Kent TN2 3EF  
Tel. +44 (0)1892 514 888  
Fax +44 (0)1892 514 222  
Freephone 0800 28 99 32  
www.harlequinfloors.com  
info@harlequinfloors.com

**Harlequin Europe S.A**  
29, rue Notre-Dame  
L-2240 Luxembourg  
Tel. (+352) 46 44 22  
Tel. FR (+352) 46 44 99  
Tel. DE (+352) 46 39 39  
Fax (+352) 46 44 40  
www.harlequinfloors.com  
info@harlequinfloors.com

**American Harlequin Corporation**  
1531 Glen Avenue, Moorestown  
NJ 08057, USA  
Tel. (856) 234 5505  
Toll Free (800) 642 6440  
Fax (856) 231 4403  
www.harlequinfloors.com  
sales@harlequinfloors.com

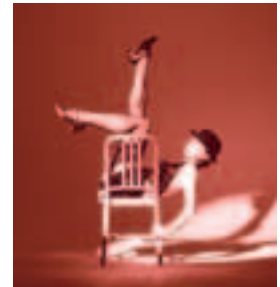
**Harlequin Australasia Pty Ltd.**  
PO Box 1028, 36A Langston Place  
Epping, NSW 1710, Australia  
Tel. +61 (2) 9869 4566  
Fax +61 (2) 9869 4547  
AUS Freecall 1300 666 900  
www.harlequinfloors.com  
contact@harlequinfloors.com

LONDON  
LUXEMBOURG  
LOS ANGELES  
PHILADELPHIA  
FORT WORTH  
SYDNEY

## Application Guide - Harlequin's Portable & Permanent Vinyl Floors

- The more dots, the more suitable the floor for the particular type of dance.

	BALLET	CONTEMPORARY	JAZZ/THEATRE	TAP/ PERCUSSIVE	AEROBICS	MULTI-PURPOSE	STAGE/OPERA	ROCK	TV	DISPLAY	PERMANENT	TEMPORARY
<b>Reversible</b>	•••	•••	•••	••			•	••	•	•	✗	✓
<b>Studio</b>	•••	•••	••		••	••	•••	•••			✓	✓
<b>Cascade</b>	•••	•••	•••	••		••	•••	•••			✓	✓
<b>Allegro</b>	••	•••	••		•••						✓	✓
<b>Tempo</b>	••	•••	••		••	••		•••			✓	✓
<b>Fiesta</b>	••	••	•••	••		•••					✓	✗
<b>Standfast</b>	••	••	•••	•••		••	•••	•••			✓	✗
<b>Hi-Shine</b>							••	••	•••	•••	✗	✓
<b>Showfloor</b>								•	••	•••	✗	✓
<b>Marine</b>	••	••	•••	•••		••	•••	•••			✓	✗



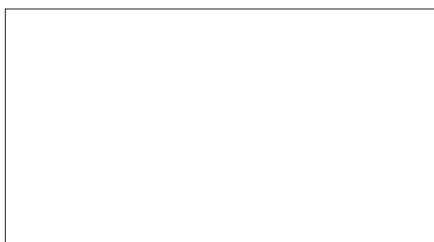
### Specification

Roll Width	1.5m (59")
Roll Length	15m, 20m, 25m (49'3", 67'5", 82')
Thickness	1.5mm (0.06")
Weight	1.96 kg/m <sup>2</sup> (3.6 lbs/yds <sup>2</sup> )
Colours	Blue, red, white, black
Permanent/ Portable	Portable
Fire Rating	EN13501

### Hi-Shine - Vinyl Floor

HARLEQUIN HI-SHINE is just one of a unique range of flooring we produce. Be sure to ask about the full range of Harlequin floors for Dance, Performing Arts, Theatre, Opera, Shows and Concerts, TV/Film Studios, Exhibitions and Displays.

### DISTRIBUTOR



01/08/BH018

CONTACT US FOR SAMPLES ON **FREephone: 0800 28 99 32**

The Company reserves the right to make any variation in design or construction of the material described.

#### Guarantee

Harlequin™ and Liberty™ are trademarks of British Harlequin plc, American Harlequin Corporation and Harlequin Europe SA.

Country of origin: Made in the EU © British Harlequin plc, American Harlequin Corporation and Harlequin Europe SA. 2007

Photography: Richard Dunkley

Dancers left to right: Femi Oyewole, Liz Braber and Dean Loxton, Ana Lucia Alves, Margarita Zafrilla Olayo

**HARLEQUIN**  
The world dances on Harlequin floors®

