



**HARLEQUIN**  
The world dances on Harlequin floors®

|                     |              |
|---------------------|--------------|
| Uniclass<br>L84621  | EPIC<br>E434 |
| CI/SfB<br>52 (43) X |              |

## Portable & Permanent Vinyl Floors

# HARLEQUIN SHOWFLOOR

HARLEQUIN SHOWFLOOR rolls out instantly to a breathtaking wet-look finish - a perfect display floor for the entertainment industry.

HARLEQUIN SHOWFLOOR is a multi-layer plain coloured vinyl floorcovering. It is produced in rolls and is mineral fibre reinforced with a cellular backing. This combination provides a beautiful loose-lay or portable lightweight sheet vinyl for display purposes.

HARLEQUIN SHOWFLOOR, because of its intended end use as a decorative portable floor, is for areas of light-medium traffic. It can be laid on any hard, smooth surface e.g. wood, plywood, chipboard, hardboard (Masonite), terrazzo, concrete.

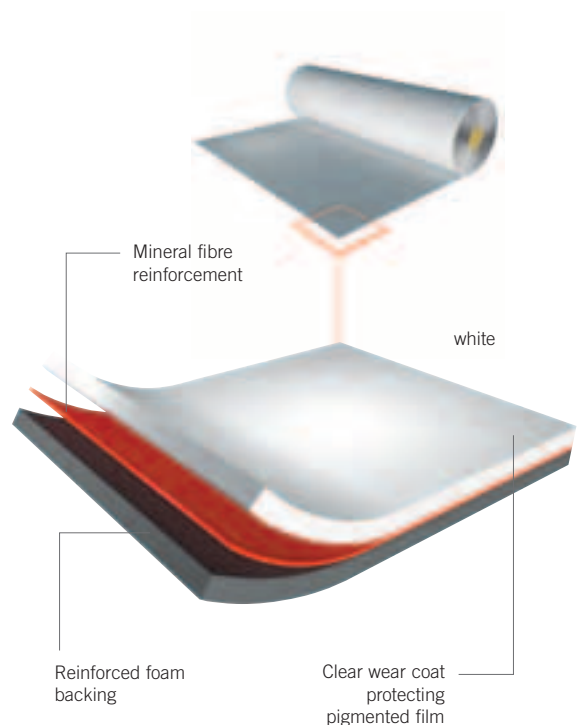
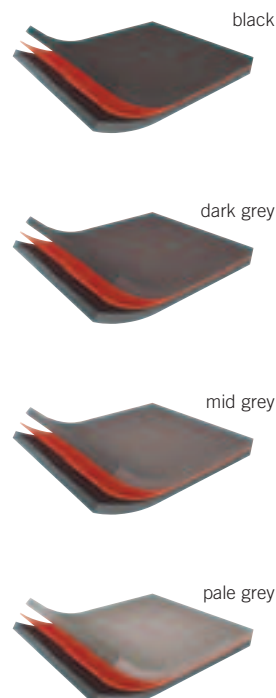
We also supply appropriate adhesive gaffer tapes - single and double-sided.



PORTABLE



2m (78½")



**British Harlequin plc**  
Festival House, Chapman Way  
Tunbridge Wells, Kent TN2 3EF  
Tel. +44 (0)1892 514 888  
Fax +44 (0)1892 514 222  
Freephone 0800 28 99 32  
www.harlequinfloors.com  
info@harlequinfloors.com

**Harlequin Europe S.A**  
29, rue Notre-Dame  
L-2240 Luxembourg  
Tel. (+352) 46 44 22  
Tel. FR (+352) 46 44 99  
Tel. DE (+352) 46 39 39  
Fax (+352) 46 44 40  
www.harlequinfloors.com  
info@harlequinfloors.com

**American Harlequin Corporation**  
1531 Glen Avenue, Moorestown  
NJ 08057, USA  
Tel. (856) 234 5505  
Toll Free (800) 642 6440  
Fax (856) 231 4403  
www.harlequinfloors.com  
sales@harlequinfloors.com

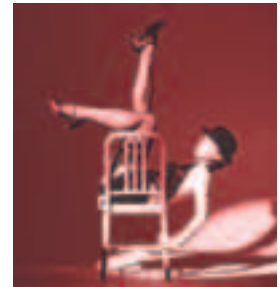
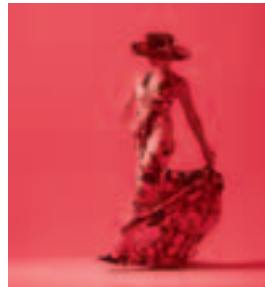
**Harlequin Australasia Pty Ltd.**  
PO Box 1028, 36A Langston Place  
Epping, NSW 1710, Australia  
Tel. +61 (2) 9869 4566  
Fax +61 (2) 9869 4547  
AUS Freecall 1300 666 900  
www.harlequinfloors.com  
contact@harlequinfloors.com

LONDON  
LUXEMBOURG  
LOS ANGELES  
PHILADELPHIA  
FORT WORTH  
SYDNEY

## Application Guide - Harlequin's Portable & Permanent Vinyl Floors

- The more dots, the more suitable the floor for the particular type of dance.

|                   | BALLET | CONTEMPORARY | JAZZ/THEATRE | TAP/<br>PERCUSSIVE | AEROBICS | MULTI-PURPOSE | STAGE/OPERA | ROCK | TV  | DISPLAY | PERMANENT | TEMPORARY |
|-------------------|--------|--------------|--------------|--------------------|----------|---------------|-------------|------|-----|---------|-----------|-----------|
| <b>Reversible</b> | •••    | •••          | •••          | ••                 |          |               | •           | ••   | •   | •       | ✗         | ✓         |
| <b>Studio</b>     | •••    | •••          | ••           |                    | ••       | ••            | •••         | •••  |     |         | ✓         | ✓         |
| <b>Cascade</b>    | •••    | •••          | •••          | ••                 |          | ••            | •••         | •••  |     |         | ✓         | ✓         |
| <b>Allegro</b>    | ••     | •••          | ••           |                    | •••      |               |             |      |     |         | ✓         | ✓         |
| <b>Tempo</b>      | ••     | •••          | ••           |                    | ••       | ••            |             | •••  |     |         | ✓         | ✓         |
| <b>Fiesta</b>     | ••     | ••           | •••          | ••                 |          | •••           |             |      |     |         | ✓         | ✗         |
| <b>Standfast</b>  | ••     | ••           | •••          | •••                |          | ••            | •••         | •••  |     |         | ✓         | ✗         |
| <b>Hi-Shine</b>   |        |              |              |                    |          |               | ••          | ••   | ••• | •••     | ✗         | ✓         |
| <b>Showfloor</b>  |        |              |              |                    |          |               |             | •    | ••  | •••     | ✗         | ✓         |
| <b>Marine</b>     | ••     | ••           | •••          | •••                |          | ••            | •••         | •••  |     |         | ✓         | ✗         |



### Specification

|                        |  |
|------------------------|--|
| Roll Width             | 2m (78.9")   |
| Roll Length            | 20m, 25m<br>(65'7", 82')                           |
| Thickness              | 1.8mm (0.07")                                      |
| Weight                 | 1.5 kg/m <sup>2</sup> (3.30 lbs/yds <sup>2</sup> ) |
| Colours                | White, black, dark grey, mid grey,<br>pale grey    |
| Permanent/<br>Portable | Portable   |
| Fire Rating            | NF P 92-507 class M3                               |

### Showfloor - Vinyl Floor

#### DISTRIBUTOR



01/08/BH018

CONTACT US FOR SAMPLES ON **FREephone: 0800 28 99 32**

The Company reserves the right to make any variation in design or construction of the material described.

#### Guarantee

Harlequin™ and Liberty™ are trademarks of British Harlequin plc, American Harlequin Corporation and Harlequin Europe SA.

Country of origin: Made in the EU © British Harlequin plc, American Harlequin Corporation and Harlequin Europe SA. 2007

Photography: Richard Dunkley

Dancers left to right: Femi Oyewole, Liz Braber and Dean Loxton, Ana Lucia Alves, Margarita Zafrilla Olayo

**HARLEQUIN**  
The world dances on Harlequin floors®

