



HARLEQUIN
The world dances on Harlequin floors®

Uniclass L84621	EPIC E434
CI/SfB 52 (43) X	

Portable & Permanent Vinyl Floors

HARLEQUIN STANDFAST

HARLEQUIN STANDFAST has long been the standard for the ultra-heavy duty and long wearing studio and stage floor.

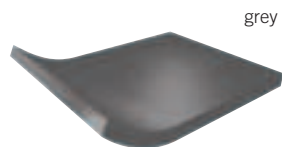
HARLEQUIN STANDFAST is an extremely hardwearing and heavy-duty flooring. It is intended for permanent installation into adhesive, when the joints are heat welded to form a continuous performance surface.

HARLEQUIN STANDFAST has a non-slip surface and is ideal as a permanent stage flooring for multi-purpose use.

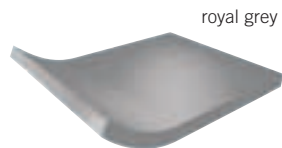
HARLEQUIN STANDFAST is simple to unroll across your stage or dance studio. You just tape the seams and edges - your floor's ready!



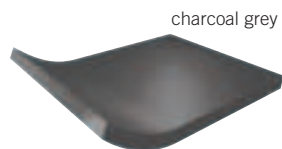
PERMANENT 78 1/2" (2m)



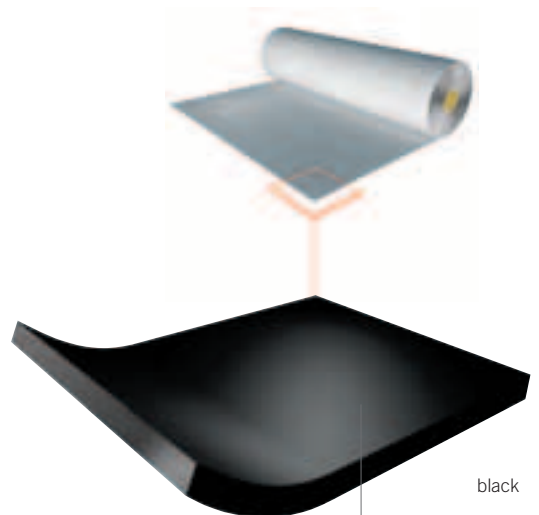
grey



royal grey



charcoal grey



black

Homogeneous PVC with special performance finish

British Harlequin plc

Festival House, Chapman Way
Tunbridge Wells, Kent TN2 3EF

Tel. +44 (0)1892 514 888

Fax +44 (0)1892 514 222

Freephone 0800 28 99 32

www.harlequinfloors.com

info@harlequinfloors.com

Harlequin Europe S.A

29, rue Notre-Dame
L-2240 Luxembourg

Tel. (+352) 46 44 22

Tel. FR (+352) 46 44 99

Tel. DE (+352) 46 39 39

Fax (+352) 46 44 40

www.harlequinfloors.com

info@harlequinfloors.com

American Harlequin Corporation

1531 Glen Avenue, Moorestown
NJ 08057, USA

Tel. (856) 234 5505

Toll Free (800) 642 6440

Fax (856) 231 4403

www.harlequinfloors.com

sales@harlequinfloors.com

Harlequin Australasia Pty Ltd.

PO Box 1028, 36A Langston Place
Epping, NSW 1710, Australia

Tel. +61 (2) 9869 4566

Fax +61 (2) 9869 4547

AUS Freecall 1300 666 900

www.harlequinfloors.com

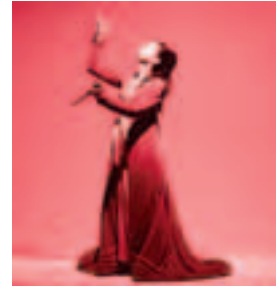
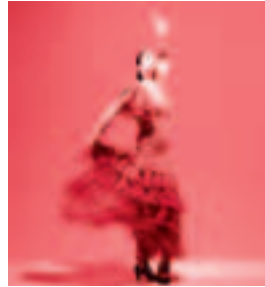
contact@harlequinfloors.com

LONDON
LUXEMBOURG
LOS ANGELES
PHILADELPHIA
FORT WORTH
SYDNEY

Application Guide - Harlequin's Portable & Permanent Vinyl Floors

- The more dots, the more suitable the floor for the particular type of dance.

	BALLET	CONTEMPORARY	JAZZ/THEATRE	TAP/ PERCUSSIVE	AEROBICS	MULTI-PURPOSE	STAGE/OPERA	ROCK	TV	DISPLAY	PERMANENT	TEMPORARY
Reversible	•••	•••	•••	••			•	••	•	•	✗	✓
Studio	•••	•••	••		••	••	•••	•••			✓	✓
Cascade	•••	•••	•••	••		••	•••	•••			✓	✓
Allegro	••	•••	••		•••						✓	✓
Tempo	••	•••	••		••	••		•••			✓	✓
Fiesta	••	••	•••	••		•••					✓	✗
Standfast	••	••	•••	•••		••	•••	•••			✓	✗
Hi-Shine							••	••	•••	•••	✗	✓
Showfloor								•	••	•••	✗	✓
Marine	••	••	•••	•••		••	•••	•••			✓	✗



Specification

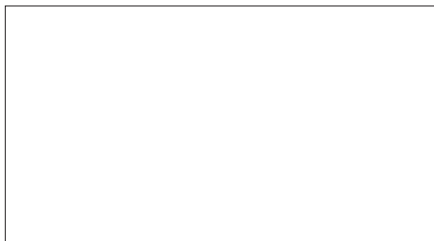
Roll Width	2m (78½")
Roll Length	15m (49')
Thickness	3mm (0.12")
Weight	3.98 kg/m ² (7.32 lbs/yds ²)
Colours	Black, grey, royal grey, charcoal grey
Permanent/Portable	Permanent
Fire Rating	DIN 4102-1 class B1

Standfast - Vinyl Floor

HARLEQUIN STANDFAST is ideally laid on any hard smooth surface, such as a wooden stage. It can also be permanently installed with Harlequin recommended adhesives. For more information regarding laying, tapes, cleaning, maintenance and storage, please contact any of our offices.

HARLEQUIN STANDFAST is just one of a unique range of flooring we produce. Be sure to ask about the full range of Harlequin floors for Dance, Performing Arts, Theatre, Opera, Shows and Concerts, TV/Film Studios, Exhibitions and Displays.

DISTRIBUTOR



01/08/BH017

CONTACT US FOR SAMPLES ON **FREephone: 0800 28 99 32**

The Company reserves the right to make any variation in design or construction of the material described.

Guarantee

Harlequin™ and Liberty™ are trademarks of British Harlequin plc, American Harlequin Corporation and Harlequin Europe SA.

Country of origin: Made in the EU © British Harlequin plc, American Harlequin Corporation and Harlequin Europe SA. 2007

Photography: Richard Dunkley

Dancers left to right: Paulin Huguet & Roland Cox, Paulin Huguet & Roland Cox, Ana Lucia Alves, Ana Lucia Alves

HARLEQUIN
The world dances on Harlequin floors®

