

## Harlequin WoodSpring

Harlequin has designed and installed a number of variations of WoodSpring. For example, a modification was designed with sliding captive brackets and was installed in 2005 on rail-guided stage wagons at the Bolshoi Ballet for vertical hanging and storage backstage.



Sequence shows the Harlequin floor being winched backstage & located into the vertical storage slot.

WoodSpring provides a permanent dance floor solution for professionals appreciating a traditional approach.

- Current technology applied to traditional floor construction
- Permanent installation
- Standard construction or custom installation for e.g. enhanced spring

Harlequin has great expertise in laying performance floors and if a WoodSpring floor is specified, we can offer the standard construction or even enhance the spring by the addition of extra layers of bearers according to the client's wishes.

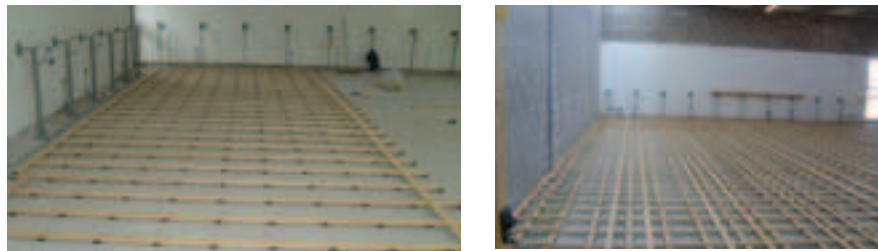


Photo courtesy of Scottish Ballet. Photographer: Andrew Ross

## Specification Guide Harlequin WoodSpring

Finish	Harlequin dance floor or approved hardwood
Top Panel	9mm moisture-resistant MDF or, optionally, solid hardwood or engineered panels/boards
Lower Panel	12mm FG plywood with marine adhesive
Basketweave	3-layer counterbattens nominally 70mm x 20mm PAR in long-grain American southern pine
Resilient Pads	10mm elastomer, proprietary density
Fastenings and adhesives	The panels are bonded with a non-setting adhesive and mechanically attached at 100mm centres at the perimeter, 150mm in the panel field with non-return fasteners. Voids are filled and sanded. With the hardwood option, boards are glued to the lower panels and secret-nailed
Installed thickness	91mm excluding surface finish

WoodSpring draws on concepts dating back to the 19th Century. Harlequin's modern interpretation blends a traditional construction approach with the technology of today's materials.

**British Harlequin plc**  
 Festival House, Chapman Way  
 Tunbridge Wells, Kent TN2 3EF  
 Tel. 01892 514 888  
 Fax 01892 514 222  
 Freephone 0800 28 99 32  
 www.harlequinfloors.com  
 enquiries@harlequinfloors.com

**Harlequin Europe SA**  
 29, rue Notre-Dame  
 L-2240 Luxembourg  
 Tel. +352 46 44 22  
 Tel. FR +352 46 44 99  
 Tel. DE +352 46 39 39  
 Free phone 008 009 069 1000  
 Fax +352 46 44 40  
 www.harlequinfloors.com  
 info@harlequinfloors.com

**American Harlequin Corporation**  
 1531 Glen Avenue, Moorestown  
 NJ 08057, USA  
 Tel. +1 (1) 856 234 5505  
 Toll Free in USA 800 642 6440  
 Fax +1 (1) 856 231 4403  
 www.harlequinfloors.com  
 dance@harlequinfloors.com

**Harlequin Australasia Pty Ltd.**  
 PO Box 1028, 36A Langston Place  
 Epping, NSW 1710, Australia  
 Tel. +61 (2) 9869 4566  
 AUS Freecall 1300 666 900  
 Fax +61 (2) 9869 4547  
 www.harlequinfloors.com  
 auscontact@harlequinfloors.com

**Harlequin Asia Limited**  
 1801 The Strand  
 49 Bonham Strand, Sheung Wan  
 Hong Kong  
 Tel: +852 254 11 666  
 Fax: +852 254 11 999  
 www.harlequinfloors.com  
 hksales@harlequinfloors.com

LONDON  
 LUXEMBOURG  
 LOS ANGELES  
 PHILADELPHIA  
 FORT WORTH  
 SYDNEY  
 HONG KONG



Photos show installation of Harlequin WoodSpring at Scottish Ballet studios, Tramway, Glasgow



Photo courtesy of Scottish Ballet. Photographer: Andrew Ross



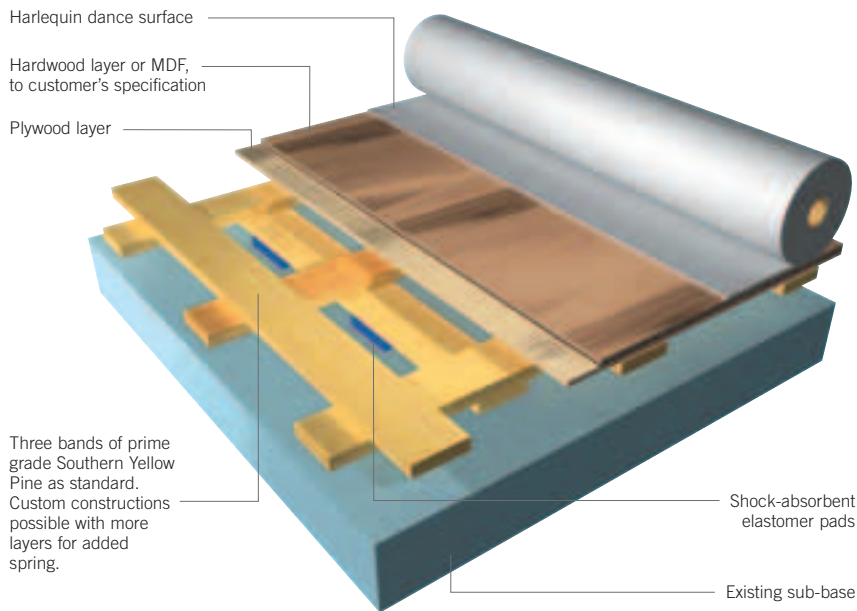
**HARLEQUIN**  
The world dances on Harlequin floors®

## Sprung Floor Panel System

# HARLEQUIN WOODSPRING™

The construction of this is known familiarly as "basketweave". Starting with a triple layer of wooden bearers laid at right angles to one another onto shock-absorbent elastomer pads, then covered with marine grade plywood and topped with a Harlequin vinyl dance surface or finished hardwood. WoodSpring provides a permanent dance floor solution for professionals appreciating a traditional approach (see diagram). Theoretically the more intermediate layers incorporated in a basketweave floor the more flexible it becomes, but the principle of diminishing returns applies and in reality the extra expense and thickness outweigh the practicality. In the Harlequin WoodSpring system shock absorption and energy return are enhanced by elastomer pads attached to the underside of the bottom layer.

Onto this structure are installed two layers of flexible panels (typically plywood and MDF), which support the Harlequin dance floor.



Uniclass L84621	EPIC E434
CI/SfB 52 (43) X	

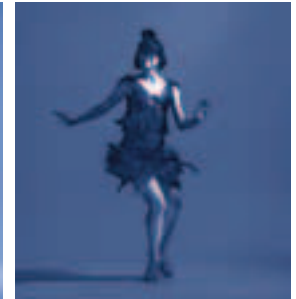
Photography:  
Richard Dunkley  
Dancers left to right:  
Paulin Huguet & Roland Cox  
Paulin Huguet & Roland Cox  
Ana Lucia Alves  
Margarita Zafrilla Olayo



## Application Guide - Harlequin's Portable & Permanent Vinyl Floors



	REVERSIBLE	STUDIO	STUDIO 'B'	CASCADE	ALLEGRO	TEMPO	FIESTA	STANDFAST	MARINE
<b>WoodSpring</b>	✓	✓	✓	✓	✓	✓	✓	✓	✓
<b>Liberty Permanent</b>		✓	✓	✓		✓	✓	✓	✓
<b>Liberty Portable</b>	✓	✓	✓	✓		✓			
<b>Activity</b>		✓	✓	✓	✓	✓	✓	✓	✓



## DIN Standard 18032 Part II Test Results Harlequin WoodSpring

	Shock Absorption	Vertical Deformation	Area Deflection	Rolling Load
Requirement	Min 53%	Min 2.3mm	Max 15%	Min 1500 N
Harlequin WoodSpring	64%	3.3mm	14.9%	> 1500 N

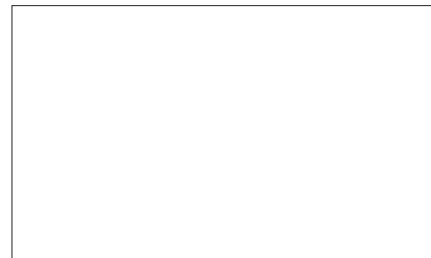
Harlequin WoodSpring basketweave floors comply with the latest requirements of the Building Regulations, Access to and Use of Buildings (Part M), regarding access for disabled people.

## Standards and Tests

Harlequin subjects its flooring products to tests by various international authorities covering, for example, physical and acoustic properties, resilience and slip resistance. Test information specific to Harlequin floors is available from British Harlequin on request.

All our sprung floors meet the relevant requirements of DIN 18032 part II, which relates principally to sports floors, and we will ensure compliance with the relevant sections of the new EN (European) standard for sports flooring. However, it must be stressed that no standards exist which relate specifically to dance floors and it cannot be assumed that if a product conforms to the DIN standard it will automatically be approved by dancers, whose predilections vary. Please consult Harlequin for guidance before specifying.

## DISTRIBUTOR



2.3 Harlequin Woodspring  
2.3 Harlequin Woodspring

**HARLEQUIN**  
The world dances on Harlequin floors®



The Company reserves the right to make any variation in design or construction of the material described. Harlequin™ and WoodSpring™ are trademarks of British Harlequin plc, American Harlequin Corporation and Harlequin Europe SA.

Country of origin: Made in the EU © British Harlequin plc, American Harlequin Corporation and Harlequin Europe SA. 2009