



HARLEQUIN
The world dances on Harlequin floors®

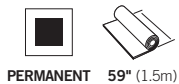
Portable & Permanent Vinyl Floors

HARLEQUIN STANDFAST™

HARLEQUIN STANDFAST has long been the standard for the ultra-heavy duty and long wearing studio and stage floor.

HARLEQUIN STANDFAST is an extremely hardwearing and heavy-duty flooring. It is intended for permanent installation into adhesive, when the joints are heat welded to form a continuous performance surface.

HARLEQUIN STANDFAST has a non-slip surface and is ideal as a permanent stage flooring for multi-purpose use.



American Harlequin Corporation

1531 Glen Avenue
Moorestown, NJ 08057, USA
Tel. (856) 234 5505
Toll Free (800) 642 6440
Fax (856) 231 4403
www.harlequinfloors.com
dance@harlequinfloors.com

British Harlequin plc

Festival House, Chapman Way
Tunbridge Wells, Kent TN2 3EF
England
Tel. +44 (0)1892 514 888
Fax +44 (0)1892 514 222
Freephone 0800 28 99 32
www.harlequinfloors.com
enquiries@harlequinfloors.com

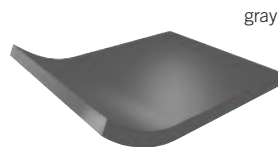
Harlequin Europe S.A

29, rue Notre-Dame
L-2240 Luxembourg
Tel. (+352) 46 44 22
Tel. FR (+352) 46 44 99
Tel. DE (+352) 46 39 39
Fax (+352) 46 44 40
www.harlequinfloors.com
info@harlequinfloors.com

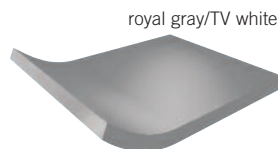
Harlequin Australasia Pty Ltd.

PO Box 1028, 36A Langston Place
Epping, NSW 1710, Australia
Tel. +61 (2) 9869 4566
Fax +61 (2) 9869 4547
AUS Freecall 1300 666 900
www.harlequinfloors.com
contact@harlequinfloors.com

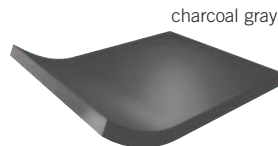
Philadelphia
London
Paris
Los Angeles
Sydney
Luxembourg
Fort Worth



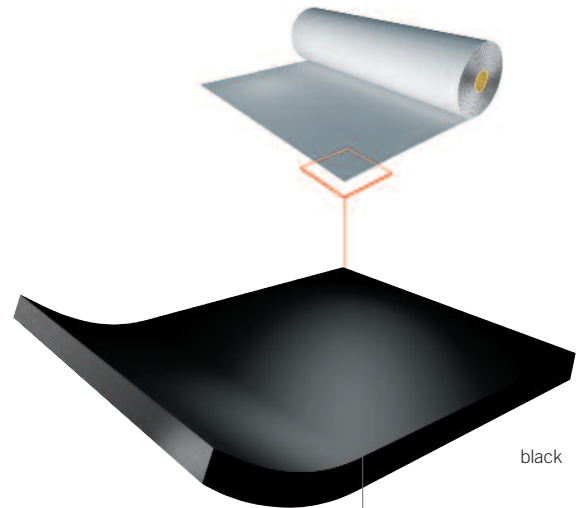
gray



royal gray/TV white



charcoal gray

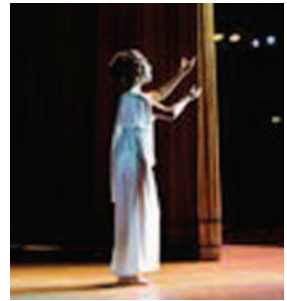
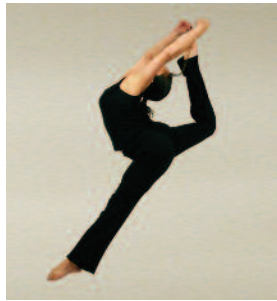


Homogeneous PVC with special performance finish

Application Guide - Harlequin's Portable & Permanent Vinyl Floors

- The more dots, the more suitable the floor for the particular type of dance.

	BALLET	CONTEMPORARY	JAZZ/THEATRE	TAP/ PERCUSSIVE	AEROBICS	MULTI-PURPOSE	STAGE/OPERA	ROCK	TV	DISPLAY	PERMANENT	TEMPORARY
Reversible	•••	•••	•••	••			•	••	•	•		✓
Studio	•••	•••	••		••	••	•••	•••			✓	✓
Studio 'B'	•••	•••	••		••	••	•••	•••			✓	✓
Cascade	•••	•••	•••	••		••	•••	•••	•		✓	✓
Allegro	••	•••	••		•••						✓	✓
Tempo	••	•••	••		••	••		•••			✓	✓
Fiesta	••	••	•••	••		•••					✓	
Standfast	••	••	•••	•••		••	•••	•••	•		✓	
Hi-Shine							••	••	•••	•••		✓
Showfloor								•	••	•••		✓
Tap Tiles				•••			••		••			✓
TV Tiles				•••			••		•••			✓
Marine	••	••	•••	•••		••	•••	•••			✓	



Specification

Roll Width	59" (1.5m)
Roll Length	65', 7" (20m)
Thickness	0.10" (2.6mm)
Weight	7.1 lbs/yds ² (3.85 kg/m ²)
Colors	Black, gray, royal gray/TV white charcoal gray
Permanent/ Portable	Permanent
Fire Rating	Class B1 (European Standard DIN 4102-1)

Standfast - Vinyl Floor

HARLEQUIN STANDFAST is ideally laid on any hard smooth surface, such as a wooden stage. It can be permanently installed with Harlequin recommended adhesives. For more information regarding laying, cleaning, and maintenance, please contact any of our offices.

HARLEQUIN STANDFAST is just one of a unique range of flooring we produce. Be sure to ask about the full range of Harlequin floors for Dance, Performing Arts, Theatre, Opera, Shows and Concerts, TV/Film Studios, Exhibitions, and Displays.

DISTRIBUTOR

08/09/AH017

