



**HARLEQUIN**  
The world dances on Harlequin floors®

## Portable & Permanent Vinyl Floors

# HARLEQUIN HI-SHINE™

HARLEQUIN HI-SHINE rolls out instantly to a breathtaking wet-look finish - a perfect display floor for the entertainment industry.

HARLEQUIN HI-SHINE has a special laminated hard polymer ultra-gloss surface, which is superior to urethane for scratch-resistance.

HARLEQUIN HI-SHINE is a roll-out floor for television, commercials, movie sets, operas, product launches, and fashion runways to name just a few. Hi-Shine is also requested for award dinners and celebrity performances which require a quick load-in and breakdown. It is a quick, simple (and very economical) answer for photo shoots where you need a smooth, shiny floor which requires speed of installation. Designers ask for Hi-Shine consistently to produce effects like water, fire, pavement etc.



**PORTABLE 59" (1.5m)**

**American Harlequin Corporation**  
1531 Glen Avenue  
Moorestown, NJ 08057, USA  
Tel. (856) 234 5505  
Toll Free (800) 642 6440  
Fax (856) 231 4403  
www.harlequinfloors.com  
dance@harlequinfloors.com

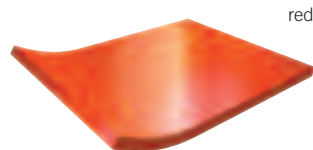
**British Harlequin plc**  
Festival House, Chapman Way  
Tunbridge Wells, Kent TN2 3EF  
England  
Tel. +44 (0)1892 514 888  
Fax +44 (0)1892 514 222  
Freephone 0800 28 99 32  
www.harlequinfloors.com  
enquiries@harlequinfloors.com

**Harlequin Europe S.A**  
29, rue Notre-Dame  
L-2240 Luxembourg  
Tel. (+352) 46 44 22  
Tel. FR (+352) 46 44 99  
Tel. DE (+352) 46 39 39  
Fax (+352) 46 44 40  
www.harlequinfloors.com  
info@harlequinfloors.com

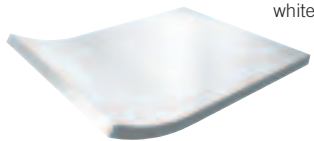
**Harlequin Australasia Pty Ltd.**  
PO Box 1028, 36A Langston Place  
Epping, NSW 1710, Australia  
Tel. +61 (2) 9869 4566  
Fax +61 (2) 9869 4547  
AUS Freecall 1300 666 900  
www.harlequinfloors.com  
contact@harlequinfloors.com

Philadelphia  
London  
Paris  
Los Angeles  
Sydney  
Luxembourg  
Fort Worth

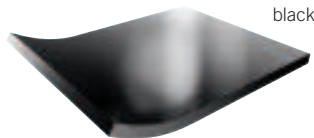
Alternative color options



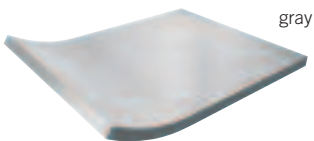
red



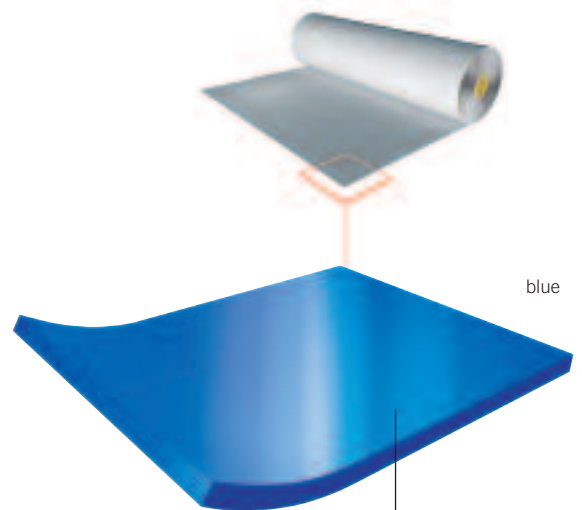
white



black



gray

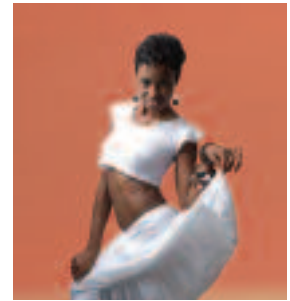


Calendered laminated PVC  
with special high-gloss PET  
surface

## Application Guide - Harlequin's Portable & Permanent Vinyl Floors

- The more dots, the more suitable the floor for the particular type of dance.

	BALLET	CONTEMPORARY	JAZZ/THEATRE	TAP/ PERCUSSIVE	AEROBICS	MULTI-PURPOSE	STAGE/OPERA	ROCK	TV	DISPLAY	PERMANENT	TEMPORARY
Reversible	•••	•••	•••	••			•	••	•	•		✓
Studio	•••	•••	••		••	••	•••	•••			✓	✓
Studio 'B'	•••	•••	••		••	••	•••	•••			✓	✓
Cascade	•••	•••	•••	••		••	•••	•••	•		✓	✓
Allegro	••	•••	••		•••						✓	✓
Tempo	••	•••	••		••	••		•••			✓	✓
Fiesta	••	••	•••	••		•••					✓	
Standfast	••	••	•••	•••		••	•••	•••	•		✓	
Hi-Shine							••	••	•••	•••		✓
Showfloor								•	••	•••		✓
Tap Tiles				•••			••		••			✓
TV Tiles				•••			••		•••			✓
Marine	••	••	•••	•••		••	•••	•••			✓	



### Specification

Roll Width	59" (1.5m)
Roll Length	67'5" (20m)
Thickness	0.06" (1.5mm)
Weight	3.6 lbs/yds <sup>2</sup> (1.96 kg/m <sup>2</sup> )
Colors	Blue, red, white, black, gray
Permanent/ Portable	Portable
Fire Rating	M3 (European Standard NFP 92-507)

### Hi-Shine - Vinyl Floor

HARLEQUIN HI-SHINE is just one of a unique range of flooring we produce. Be sure to ask about the full range of Harlequin floors for Dance, Performing Arts, Theatre, Opera, Shows and Concerts, TV/Film Studios, Exhibitions, and Displays.

DISTRIBUTOR

01/08/AH018

**HARLEQUIN**  
The world dances on Harlequin floors®

