



HARLEQUIN
The world dances on Harlequin floors®

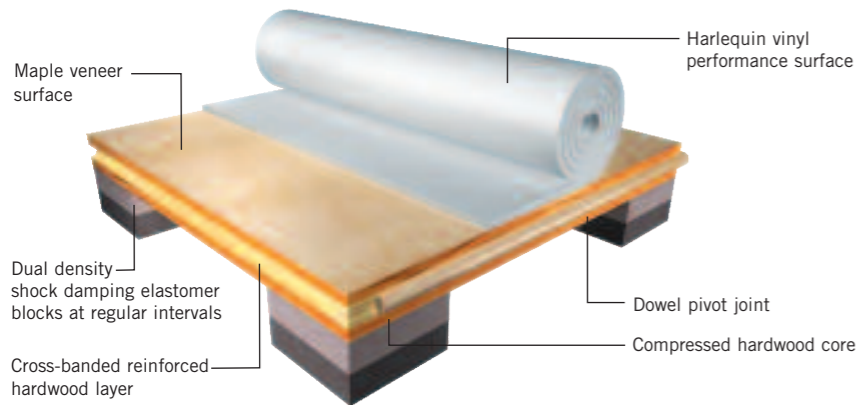
Sprung Floor Panel System

HARLEQUIN LIBERTY™

Harlequin Liberty Permanent Sprung Floor Panels

The pivot joint extends along the panel edges to within 20mm of the corners ensuring the corners are protected from flexion under load. The edges are also carefully supported by elastomer blocks.

The unique feature of the blocks is their "dual density" (a sandwich of two different hardnesses tested by the Shore Durometer Test).

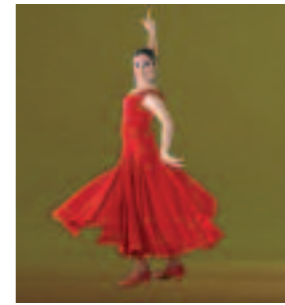
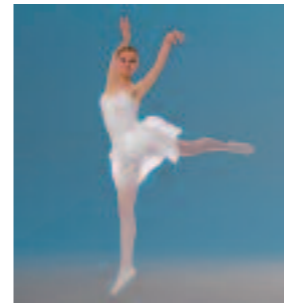
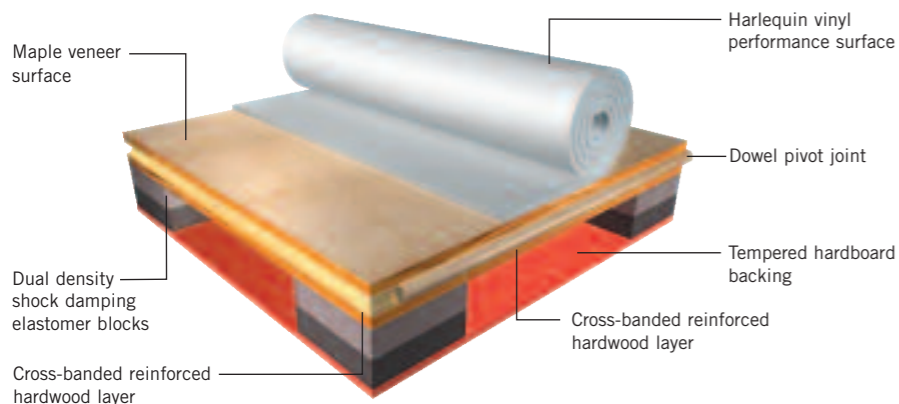


Harlequin Liberty Portable Sprung Floor Panels

Harlequin Liberty sprung floor panels are available in both portable and permanent versions. Oil-tempered hardboard is attached to the underside of the portable panels to

- Ease sliding of the panels into position
- Protect the elastomer blocks
- Allow the panels to be stacked more readily.

Edge trim and ramps are available for stage use or where the sprung floor does not extend to the walls of the studio. Harlequin Liberty portable panels are also available with matt black surface for stage use.



Application Guide - Harlequin's Portable & Permanent Vinyl Floors

✓ Available

	REVERSIBLE	STUDIO	STUDIO 'B'	CASCADE	ALLEGRO	TEMPO	FIESTA	STANDFAST	MARINE
Liberty Permanent		✓	✓	✓		✓	✓	✓	✓
Liberty Portable	✓	✓	✓	✓		✓			
Activity		✓	✓	✓	✓	✓	✓	✓	✓
WoodSpring		✓	✓	✓	✓	✓	✓	✓	✓

Cart Specification

Unladen weight	400 lbs (370kg)
Capacity	20 full size panels or equivalent full and half size panels
Wheels	4 swivel, 4 corner wheels braked. Wheel diameter 6" (152mm) Non-marking rim

Liberty - Portable Sprung Floor Panels Storage Cart

Harlequin Panel Storage Carts are designed to protect the Liberty panels and provide an easy and safe way of moving them from place to place, whether from stage to scenery dock or on and off vehicles when touring.

Sturdily made of black scratch-resistant powder-coated steel, each cart is mounted on 4 swivel wheels with non-marking rims, the corner wheels having brakes.

Each cart has a capacity of 20 full size Harlequin Liberty portable panels, with half size panels being loaded side by side.

In addition, there are 2 fork pockets under the cart to enable a fully-loaded cart to be handled by fork lift truck and the frame of the cart can readily be secured by straps when loading in a vehicle for road transport.

DISTRIBUTOR



01/08/AH021

2.1 Harlequin Liberty
2.1 Harlequin Liberty

HARLEQUIN
The world dances on Harlequin floors®



Harlequin Liberty Permanent Sprung Floor Panels

The unique feature of the blocks is their “dual density” (a sandwich of two different hardnesses tested by the Shore Durometer Test).

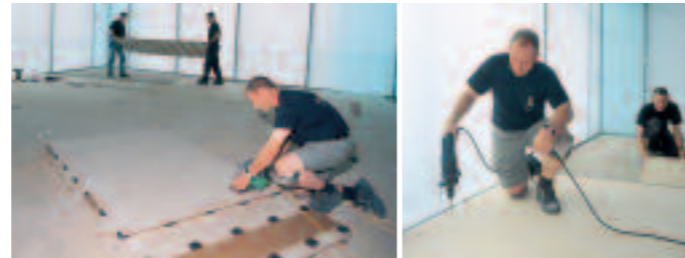
This provides progressive compression under light and heavy loads providing the same “feel” and energy return to one or several dancers on the same panel.

Specification Guide Harlequin Liberty Permanent Sprung Floor Panels

	Dimensions	Weight	Installed Thickness	Installation Times
Liberty Permanent	Full size panel 96" x 48" (2.42m x 1.21m) Half size panel 48" x 48" (1.21m x 1.21m)	83 lbs (36.5 kg)	1 1/2" (37mm)	Approx. 120 sq.yd. (100 sq.m) per day with 2 persons

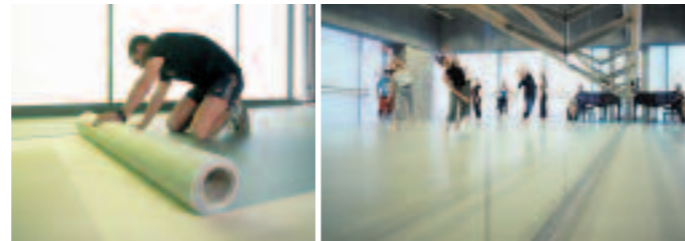
Harlequin Liberty is a modular floor manufactured from engineered boards with closed cell elastomer blocks on the underside to give uniform and consistent shock damping. The panels are laid brickwork fashion on the sub-floor so that cross-joins do not coincide. They are linked to each other by a radiussed pivot joint.

Permanent installation of Liberty panels



Fitting at perimeter

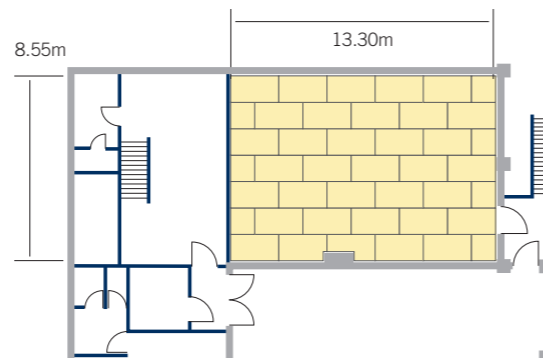
Rolling out the dance vinyl



Installation of Liberty panels

Panels layout

Liberty panels with Cascade surface



Harlequin Liberty Portable Sprung Floor Panels

Harlequin Liberty sprung floor panels are available in both portable and permanent versions. Oil-tempered hardboard is attached to the underside of the portable panels. Edge trim and ramps are available for stage use or where the sprung floor does not extend to the walls of the studio. Harlequin Liberty portable panels are also available with matt black surface for stage use.

Specification Guide Harlequin Liberty Portable Sprung Floor Panels

	Dimensions	Weight	Installed Thickness	Installation Times
Liberty Portable	Full size panel 96" x 48" (2.42m x 1.21m) Half size panel 48" x 48" (1.21m x 1.21m)	93 lbs (52 kg)	1 5/8" (42mm) plus the Harlequin floor	Approx. 60 sq.yd. (50 sq.m.) per hour with 2 persons



Installing the panels

Fitting the edge trim

American Harlequin Corporation
1531 Glen Avenue
Moorestown, NJ 08057, USA
Tel. (856) 234 5505
Toll Free (800) 642 6440
Fax (856) 231 4403
www.harlequinfloors.com
dance@harlequinfloors.com

British Harlequin plc
Festival House, Chapman Way
Tunbridge Wells, Kent TN2 3EF
England
Tel. +44 (0)1892 514 888
Fax +44 (0)1892 514 222
Freephone 0800 28 99 32
www.harlequinfloors.com
enquiries@harlequinfloors.com

Harlequin Europe S.A
29, rue Notre-Dame
L-2240 Luxembourg
Tel. (+352) 46 44 22
Tel. FR (+352) 46 44 99
Tel. DE (+352) 46 39 39
Fax (+352) 46 44 40
www.harlequinfloors.com
info@harlequinfloors.com

Harlequin Australasia Pty Ltd.
PO Box 1028, 36A Langston Place
Epping, NSW 1710, Australia
Tel. +61 (2) 9869 4566
Fax +61 (2) 9869 4547
AUS Freecall 1300 666 900
www.harlequinfloors.com
contact@harlequinfloors.com

Philadelphia
London
Paris
Los Angeles
Sydney
Luxembourg
Fort Worth

DIN STANDARD 18032 PART II Test Results Harlequin Liberty

	Shock Absorption	Vertical Deformation	Area Deflection	Rolling Load
Requirement	Min 53%	Min 2.3mm	Max 15%	Min 1500 N
Harlequin Liberty	67%	4.1mm	12.8%	> 1500 N