



HARLEQUIN
The world dances on Harlequin floors®

Portable & Permanent Vinyl Floors

HARLEQUIN TAP TILES™

TAP TILES provide a specially formulated dance flooring to meet the needs of tap, but with protection against pits and scratches. Provided as yard square tiles that slide together to rapidly provide a tap area, leaving the floor beneath untouched.

HARLEQUIN TAP TILES are manufactured to exceptional standards to ensure accuracy and flatness, requiring careful examination at every stage of the process. The result – tiles so precise they butt together with the barest hair's breadth between them. When used on slippery sub-floors we recommend the use of double-sided tape at key places around the perimeter of the tap area. Tap Tiles are supplied with a protective coating to the satin finish that can be simply removed before first use with a clean cloth dampened with a mild detergent solution such as dishwashing detergent.



PORTABLE

PERMANENT

36"

American Harlequin Corporation

1531 Glen Avenue
Moorestown, NJ 08057, USA
Tel. (856) 234 5505
Toll Free (800) 642 6440
Fax (856) 231 4403
www.harlequinfloors.com
dance@harlequinfloors.com

British Harlequin plc

Festival House, Chapman Way
Tunbridge Wells, Kent TN2 3EF
England
Tel. +44 (0)1892 514 888
Fax +44 (0)1892 514 222
Freephone 0800 28 99 32
www.harlequinfloors.com
enquiries@harlequinfloors.com

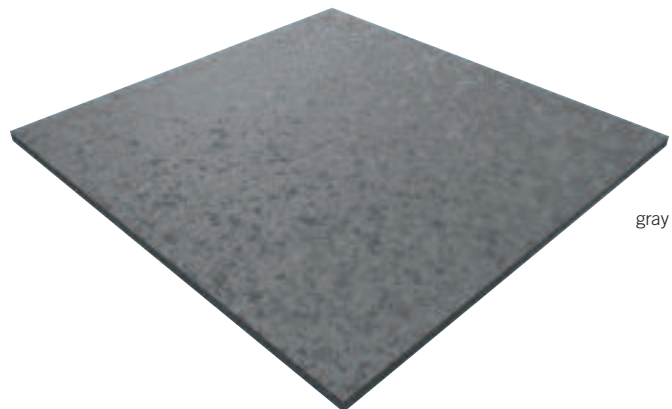
Harlequin Europe S.A

29, rue Notre-Dame
L-2240 Luxembourg
Tel. (+352) 46 44 22
Tel. FR (+352) 46 44 99
Tel. DE (+352) 46 39 39
Fax (+352) 46 44 40
www.harlequinfloors.com
info@harlequinfloors.com

Harlequin Australasia Pty Ltd.

PO Box 1028, 36A Langston Place
Epping, NSW 1710, Australia
Tel. +61 (2) 9869 4566
Fax +61 (2) 9869 4547
AUS Freecall 1300 666 900
www.harlequinfloors.com
contact@harlequinfloors.com

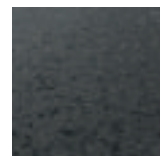
Philadelphia
London
Paris
Los Angeles
Sydney
Luxembourg
Fort Worth



gray

white

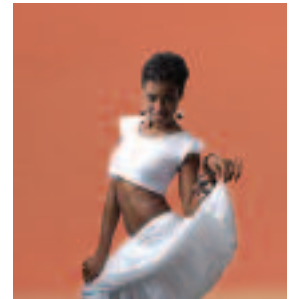
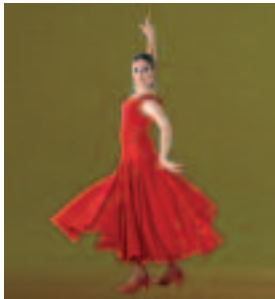
black



Application Guide - Harlequin's Portable & Permanent Vinyl Floors

- The more dots, the more suitable the floor for the particular type of dance.

	BALLET	CONTEMPORARY	JAZZ/THEATRE	TAP/ PERCUSSIVE	AEROBICS	MULTI-PURPOSE	STAGE/OPERA	ROCK	TV	DISPLAY	PERMANENT	TEMPORARY
Reversible	•••	•••	•••	••			•	••	•	•		✓
Studio	•••	•••	••		••	••	•••	•••			✓	✓
Studio 'B'	•••	•••	••		••	••	•••	•••			✓	✓
Cascade	•••	•••	•••	••		••	•••	•••			✓	✓
Allegro	••	•••	••		•••						✓	✓
Tempo	••	•••	••		••	••		•••			✓	✓
Fiesta	••	••	•••	••		•••					✓	
Standfast	••	••	•••	•••		••	•••	•••			✓	
Hi-Shine							••	••	•••	•••		✓
Showfloor								•	••	•••		✓
Tap Tiles				•••			••		••			✓
TV Tiles				•••			••		•••			✓
Marine	••	••	•••	•••		••	•••	•••			✓	



Specification

Thickness	0.125" (3.2mm)
Weight	10 lbs/yd ² (4.6 kg/m ²) per tile
Colors	White, black, gray
Fire Rating	To North American standard 4.s.102.2: flame spread 15, smoke development 40

Tap Tile - Vinyl Floor

HARLEQUIN TAP TILES can be stored in an astonishingly small storage area - just stack the tiles on top of one another. 180 square feet of tap tiles are a little more than 2 1/2" high when stacked.

HARLEQUIN TAP TILES are just one of a unique range of flooring we produce. Be sure to ask about the full range of Harlequin floors for Dance, Performing Arts, Theatre, Opera, Shows and Concerts, TV/Film Studios, Exhibitions, and Displays.

DISTRIBUTOR

01/08/AH110



Photography: Richard Dunkley

Dancers left to right: Ana Lucia Alves, Ana Lucia Alves, Liz Braber and Dean Loxton, Margarita Zafrilla Olayo